



**AquaSoft® Earth Pilot**

**User Manual**

Copyright © AquaSoft® GmbH 1999-2013

# Contents

<b>1 Earth Pilot</b>	<b>1</b>
1 Installation .....	1
2 Navigation in Google Earth .....	1
3 Creating camera pans .....	1
4 Inserting maps as images .....	2
5 Downloading images .....	2

# 1 Earth Pilot

With Earth Pilot you can spice up your slideshows with maps, flights in motion or the globe and with photos of the whole world.

Please note that Google Earth™ is a trademark of Google Inc. You use the interfaces and data supplied by Google Earth™ on your own initiative and at your own risk. By using an AquaSoft product you also do not acquire any rights in a Google product. If you would like to use maps and image material in your presentations, please obtain the consent of the respective proprietor of the right. AquaSoft cannot impart this right to you.

## 1.1 Installation



In order to be able to use Earth Pilot, the Google Earth™ browser plug-in must be installed. If the plug-in is not yet installed, you will be requested to install it when Earth Pilot is started. To do so, simply click this [download link](#).

The Google web page should look approximately as shown on the left. Click "Download Google Earth Plugin" and install the plug-in.

Before you can begin, you have to specify a target directory in which Earth Pilot is supposed to file all images and videos created, by clicking "[Settings](#)".

## 1.2 Navigation in Google Earth

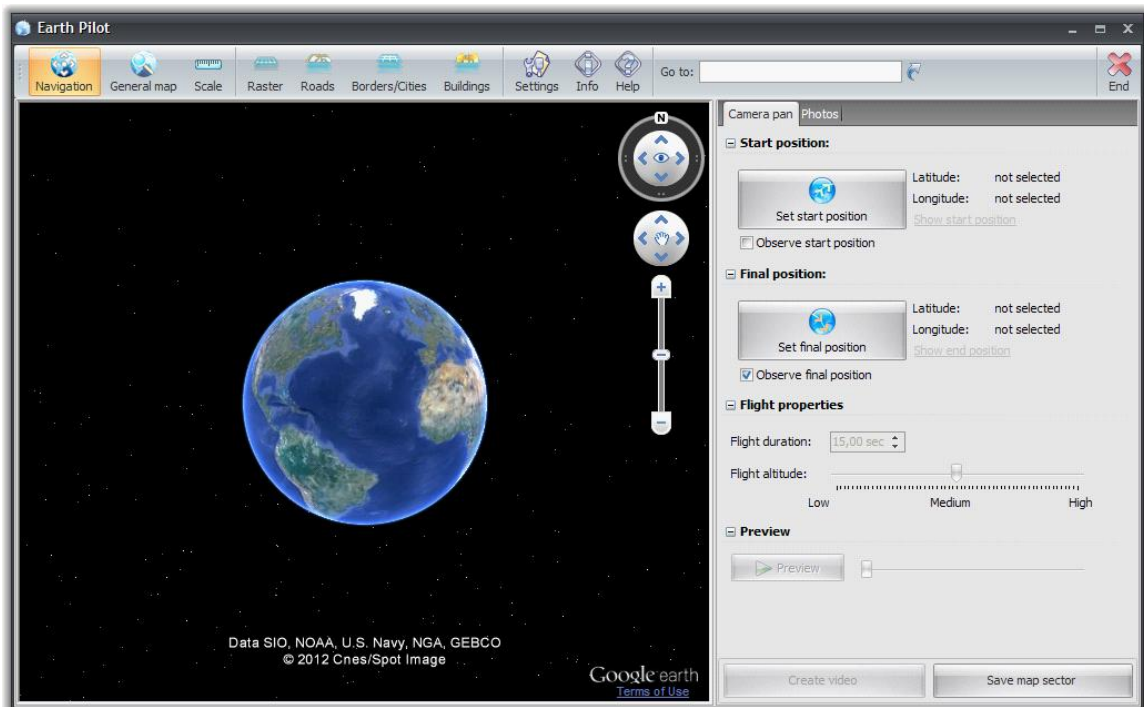
You can navigate within the globe, as is usual with Google Earth™. You can move the globe with the mouse or move the navigation elements in the upper right-hand area.

## 1.3 Creating camera pans

A tracking shot always has a starting position and a final position. [Navigate](#) to a desired section of the map and click "[Set start position](#)". Then move the map to the target and click "[Set end position](#)". You can do that as often as you wish and in any desired sequence. In so doing, you have specified a camera pan, the trajectory of which you can see by clicking "[Preview](#)". The purpose of the check boxes "[Observe start position](#)" and "[Observe end position](#)" is that the respective position will be observed during start or landing. You can determine how long the flight should last by changing the details in the field "[Flight duration](#)". The height of the flight is, on the one hand, apparent from the flight speed, however can be adjusted using the "[Flight altitude](#)" control.

Should you be satisfied with the flight, click "[Create video](#)". Then Earth Pilot begins to compute a

video of the camera pan. This can last several minutes or even a few hours, depending upon the speed of your Internet connection, as well as your PC. Once the video is finished it is automatically inserted into your slideshow. You can now exit Earth Pilot or compute further videos.



## 1.4 Inserting maps as images

[Navigate](#) to the desired section of the map and click **"Save map sector"**. Earth Pilot now generates an image of the map, saves it and inserts it into the slideshow. You can then exit Earth Pilot or insert further map sectors.

## 1.5 Downloading images

With their **"Panoramio"** service Google provides the option to load thousands of images from many places of the world. You visited Paris but didn't take a cool picture of the Eiffel tower? No problem, there are hundreds of photos taken by other people available. Simply [navigate](#) to the location of your choice and click **"Load images"**. Earth Pilot will now calculate the coordinates and show all suiting images in the list on the right side. Select one or more images and click **"Insert selected images"**. Now Earth Pilot will download the images and insert them into your slideshow.

AquaSoft Earth Pilot - Help

Copyright © AquaSoft ® GmbH 1999-2013

Visit us on the Internet:  
[www.dvd-photoshow.com](http://www.dvd-photoshow.com)

